

Intacct Insight™

Intacct Insight™ is a set of powerful tools for real-time business intelligence, management and control. Allow users to create and share dashboards that contain real-time interactive charts and reports, financial and operational analytics, Web 2.0 mashups and performance management capabilities. Intacct Insight also empowers employees with real time, actionable and tailored financial and operational information, so they can make better decisions and drive business performance.

Financial Visibility and Business Intelligence

Users can create dashboards using any report or graph from any application, for both financial management and operational reporting. Live reports reflect the real-time performance of

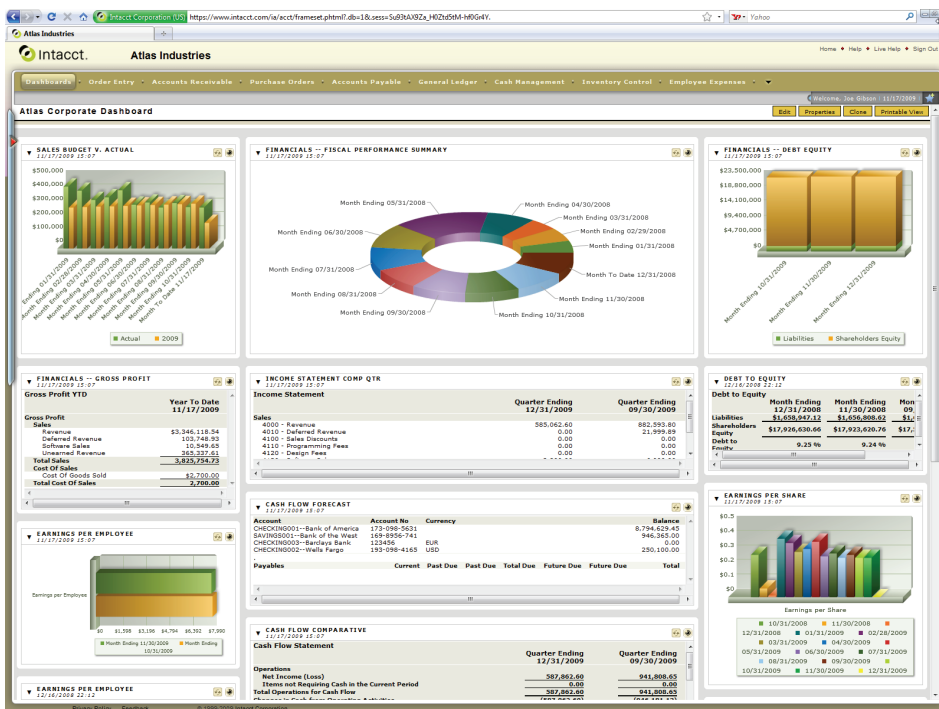
the company, and support drill-down capabilities that allow you to dig into the data at any level you need (even down to attached supporting documents, for example scanned signature documents) to greatly simplify research and audits. In addition to reports, you can bring

data from any Intacct application onto the dashboard, including customers, vendors, items, invoices and bills. Your dashboard is your central business desktop containing all your most important data, in real time. Intacct Insight allows you to drill down to the details behind each activity, enforcing the proper permissions and controls along the way.

Each dashboard contains only the information each executive or employee needs or wants to review, with the details behind the reports just a click away. A sales manager can view active opportunities from Salesforce CRM alongside bookings by sales rep and payments by customer from Intacct. An accounting manager in accounts payable can see relevant payment information and bills to approve, and can filter the data for a range of vendor names.

You can customize dashboards with your favorite colors and you can share dashboards with other users that answer the questions they ask in the way that they want to see the answer. Users can copy or clone a dashboard and personalize it without changing the dashboard they started from.

Your dashboards can be private or public, shared or deeply customized. By creating the right windows into the company's operation for each executive and for each employee, the finance



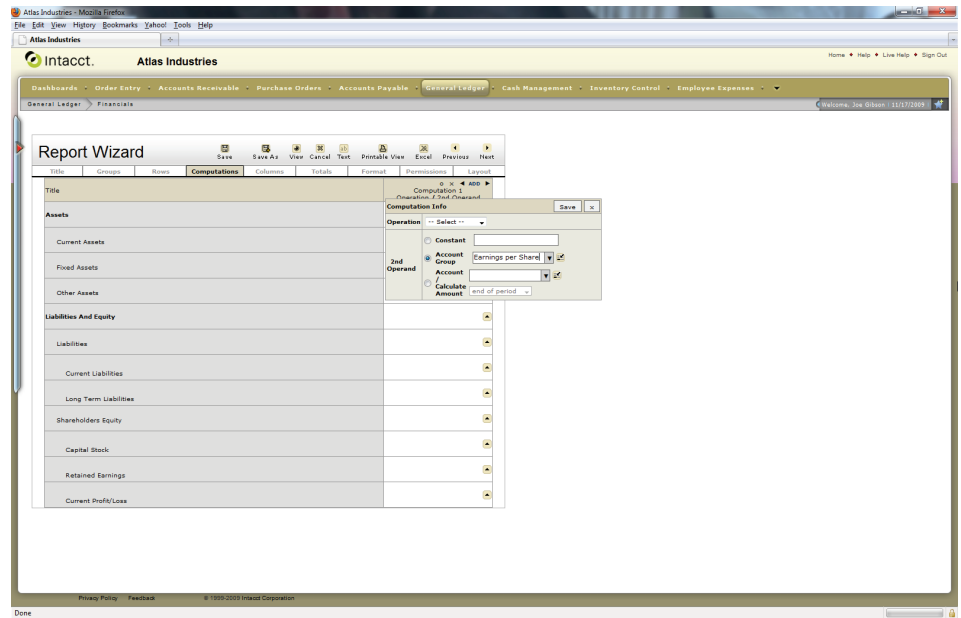
Intacct Insight provides unlimited dashboards for financial and operational reporting.

department can focus on getting today's work done rather than answering questions about yesterday's reports — giving each user the power to drill down and research the questions they have, from their desktop. Each user can create the dashboard or dashboards that they want to work from, without requiring help from a system administrator or power user.

Global Control, Local Autonomy

Intacct validates user permissions and access to individual components on the dashboard according to your security permission definitions, at a very granular level. Intacct Insight allows you to give access at a summary level while still preventing users from accessing detailed information that they should not see.

Power users can also create dashboards for other employees and limit those employees' ability to modify data by granting read-only permissions.



Intacct Insight lets you perform spreadsheet-like calculations and cross-tabs directly in reports.

Built-in Performance Management

Deep financial and operational reports enable you to manage the business, not just track your finances. Intacct Insight includes built-in performance management capabilities that make it easy to define and publish key performance indicators across the

business. Users can create reports that support non-financial data such as rooms per hotel or tables per restaurant, allowing real-time operational reporting of room occupancy or tabletop management. You can report on earnings per share, or revenue per employee — the numbers you really need to manage your business, not just the numbers available from your financial system. You can easily calculate performance against plan, benchmarks, other divisions, locations or any other business characteristics.

	Quarter Ending 12/31/2009	Quarter Ending 09/30/2009
Assets		
Current Assets		
1000 - Cash in Bank	8,794,629.45	8,794,629.45
1005 - Cash in Bank - Euro	0.00	0.00
1010 - Petty Cash	250,100.00	250,100.00
1015 - Undeposited Funds	0.00	0.00
1020 - Savings	946,365.00	946,365.00
1100 - Accounts Receivable	8,669,082.56	8,081,219.96
1125 - Allowance For Doubtful Accounts	45,821.12	45,821.12
1150 - Employee Advances	170.00	170.00
1200 - Inventory	75,392.21	75,392.21
1300 - Prepaid Expenses	622,965.00	622,965.00
Total Current Assets	19,404,425.34	18,816,602.74
Fixed Assets		
1500 - Equipment	1,327,815.00	1,327,815.00
1510 - Building	1,666,110.00	1,666,110.00
1520 - Furniture & Fixtures	144,100.00	144,100.00
1530 - Leasehold Improvements	1,180,470.00	1,189,470.00
1600 - Accum. Depreciation- Equipment	(12,815.00)	(12,815.00)
1610 - Accum. Depreciation- Building	(8,510.00)	(8,510.00)
1620 - Accum. Depreciation- Furniture & Fixtures	(12,660.00)	(12,660.00)
1630 - Accum. Depreciation- Leasehold Improvements	(125,645.00)	(125,645.00)
1640 - Accumulated Amortization	(125,610.00)	(125,610.00)
Total Fixed Assets	4,042,355.00	4,042,355.00
Other Assets	0.00	0.00
Total Other Assets	0.00	0.00
Total Assets	23,446,820.34	22,858,957.74
Liabilities And Equity		
Liabilities		
Current Liabilities		
2000 - Accounts Payable	169,225.50	169,225.50
2005 - Sales Tax Payable	12,454.65	12,454.65
2010 - Accrued Expense	10,605.00	10,605.00
2020 - Accrued Compensation	1,000,000.00	1,000,000.00
Total Current Liabilities	1,192,285.15	1,192,285.15
Long Term Liabilities		
2500 - Note Payable	500,000.00	500,000.00
Total Long Term Liabilities	500,000.00	500,000.00
Total Liabilities	1,692,285.15	1,692,285.15
Shareholders Equity		
Capital Stock		
3000 - Capital Stock	5,000,000.00	5,000,000.00
3010 - Paid-In- Capital	6,190,725.00	6,190,725.00
Total Capital Stock	11,190,725.00	11,190,725.00
Retained Earnings		
3100 - Retained Earnings	9,975,947.59	9,034,138.94
Total Retained Earnings	9,975,947.59	9,034,138.94
Current Profit/Loss	587,892.60	94,180.65
Total Shareholders Equity	21,745,535.19	21,166,972.59
Total Liabilities And Equity	23,446,820.34	22,858,957.74

Powerful reporting capabilities let you pull data from any module in the format you need.

Stay Up-to-Date

Intacct Insight lets you directly access workflow events awaiting your action, such as expense reports you need to approve. You can track significant events that need attention, such as POs exceeding preset limits or invoices that are due. Users can easily customize and personalize the rules that trigger alerts. You can keep up with real-time data analysis and stay up-to-date with the latest information from all sides of

