

Abra eRecruiter

Significantly decrease your time-to-hire cycle and cut costs with Web-based recruiting .

Abra eRecruiter can optimize your recruiting processes by bringing together recruiters, HR managers, employees, and applicants online. It includes comprehensive workflows that completely streamline recruiting approval and notification processes, public and internal career websites that allow applicants and employees to search for open positions, and Internet job board integration. With Abra eRecruiter:

- Get better qualified applicants from the Web with the ability to include screening questions with your online job application.
- Simplify the requisition management process by copying existing requisitions, allowing managers to create their own requisitions, and automatically routing them for approval.
- Widen your candidate search with integration to job boards such as Monster.com and an online career center that works with and matches the look and feel of your company web site and Intranet.



Abra Workforce Connections

provides the Microsoft .Net powered intranet/Internet workflow needed to take your company's HR and Payroll strategy to the next level. Abra Workforce Connections is scalable for any size company and is integrated with the Sage Abra HRMS database and core HR, Payroll, and Training applications.

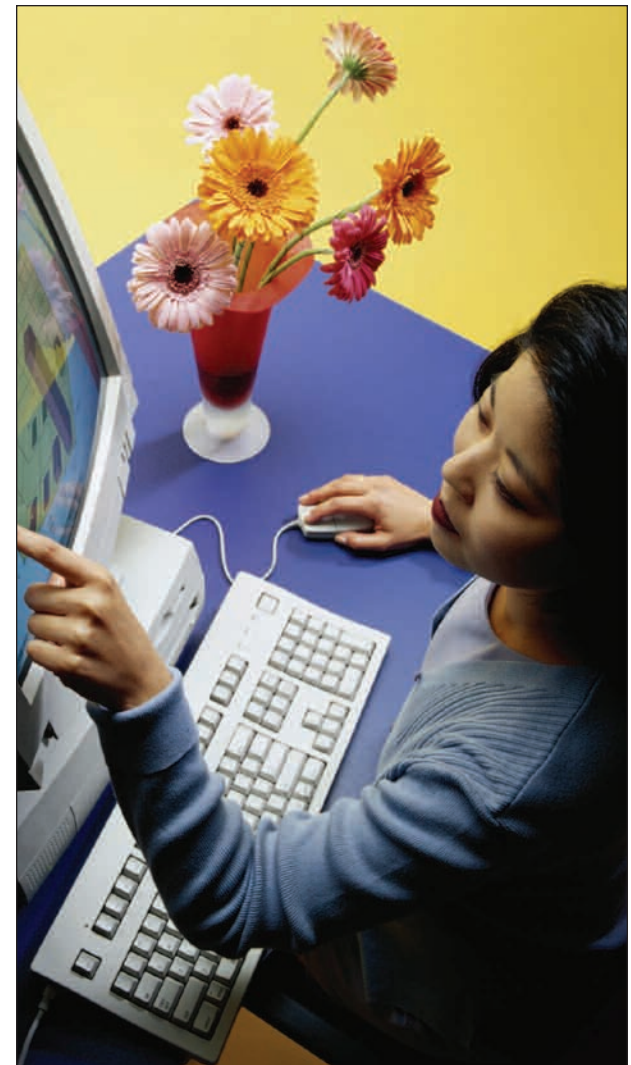
Microsoft and the .NET Logo are trademarks, or registered trademarks of Microsoft Corporation in the United States and/or other countries.

©2005 Sage Software, Inc. All rights reserved. The Sage Software logo and the Sage Software product and service names mentioned herein are registered trademarks or trademarks of Sage Software, Inc., or its affiliated entities. All other brands are the trademarks of their respective owners.



sage
software
Your business in mind.

888 Executive Center Dr. W St. Petersburg, FL 33702 | 800-424-9392 | www.sageabra.com



*Online tools to streamline your
HR and Payroll processes*

SAGE ABRA

Integrated Web-based workflow automation with Sage Abra ESS, Sage Abra Benefits Enrollment and Sage Abra eRecruiter

Abra Workforce Connections

Web-based employee self service, recruiting, and benefits enrollment modules so you can choose solution that's right for your company.

Abra Workforce Connections is an innovative self-service system designed to connect employees, managers, and applicants to critical business processes by automating HR and payroll workflows. With Abra Workforce Connections, tedious data entry, manual paperwork, and disconnected departments are a thing of the past.

- Improve efficiency and productivity by authorizing employees and managers to securely view and update HR and payroll information online.
- Reduce costly errors by entering benefits elections and personal data only once, improving accuracy.
- Streamline approval and notification processes with superior workflow capabilities.
- Reduce routine inquiries and paperwork, freeing up valuable staff time to address more important organizational issues, such as cost effective employee benefits programs, effective recruiting and retention programs, competitive compensation plans, and workforce training.

The result? An exceptionally smooth flow of communication between employees, managers, applicants, and administrators with a very attractive return on investment through significant time and cost savings, and empowered employees.



Abra ESS

Seamless communication between employees, managers, and administrators

By allowing employees to take ownership of their personal information, companies can save considerable time and HR overhead. Plus, studies have shown that readily-available company information can significantly improve employee morale and retention. Abra ESS allows employees to view and update their own HR and payroll information anytime, anyplace via the intranet or Internet. Plus, changes made to the system are communicated to all relevant parties automatically. With Abra ESS:

- Employees can update personal information and view benefits elections, absence transactions, pay stubs, W-4 information, and much more. This can restore hours of the HR administrator's day previously spent attending to routine employee requests.
- You can facilitate communication processes and save paper by providing an easily-accessible, centralized location for company policies, announcements, and links to external URLs.
- You're able to automate employee activities such as time-off requests and W-4 form changes, resulting in faster approvals and less paperwork.

Abra Benefits Enrollment

Save money, time, and headaches with online enrollment

Save countless hours and piles of paperwork by moving open enrollment online. Abra Benefits Enrollment extends the already powerful benefits management solution of Sage Abra HR into employees' hands via the Internet. Employees can also update dependents, beneficiaries, and their benefit elections at any time throughout the year as a result of a life event. With Abra Benefits Enrollment:

- Save paper and headaches by eliminating the need for printed documents.
- Shave days, or even weeks, off the benefits open enrollment period by eliminating time delays due to manual processing.
- Reduce administration time by having employees enter their own elections, resulting in fewer duplicate entries and improved data accuracy communicated to benefits plan providers. Abra Benefits Enrollment makes it easy to manage, monitor and verify the entire process electronically.
- End billing errors with powerful reports that catch discrepancies easily, potentially saving thousands of dollars per year.
- Increase employee satisfaction by giving everyone full and detailed 24/7 access to benefit plans, as well as links to providers who often answer key benefit questions on their Web sites.



sage
software
Your business in mind.